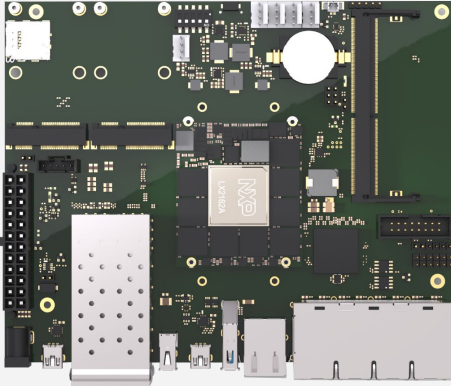


ClearFog LX2-Lite SBC

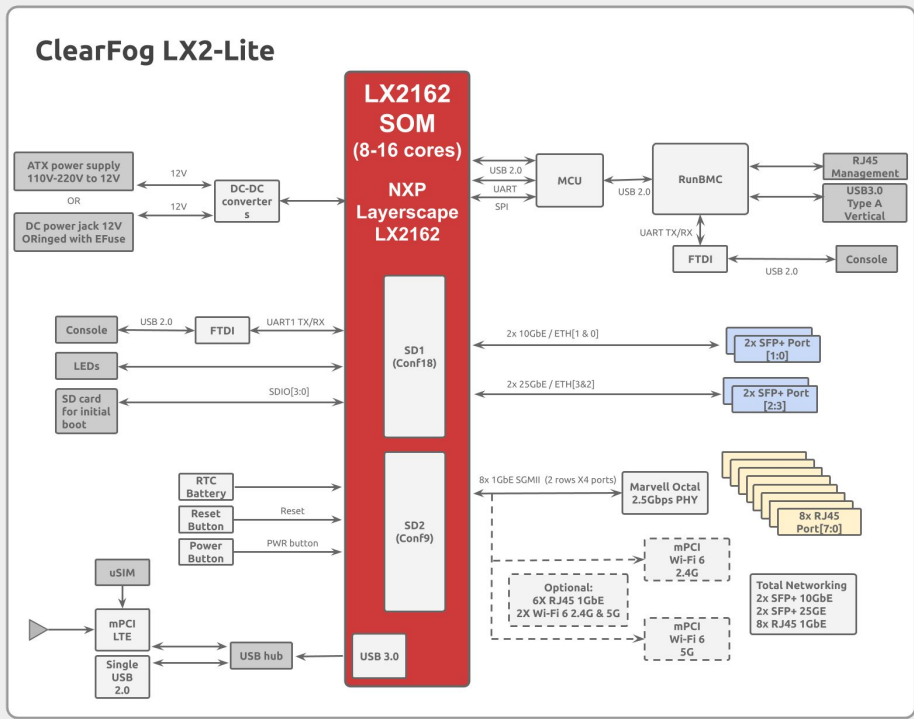
Up to 16 x Arm Cortex A72, up to 2.2GHz



- SoC: NXP Layerscape LX2162A up to 16-core Arm Cortex A72
- Memory: Up to 16GB SO-DIMM DDR4 (not included by default)
- Storage: Optional eMMC (8GB by default)
- Temperature: Commercial (0C to 70C)
- OS: Linux



	ClearFog LX2-Lite
I/O	1 x USB 3.0
Networking	2 x SFP28 ports (25GbE each) 2 x SFP+ ports (10GbE each) 8 x 1GbE copper (RJ45)
Processor	NXP Layerscape LX2162A 16-core Arm Cortex A72 up to 2GHz
Memory & Storage	Up to 16GB DDR4 8GB eMMC MicroSD
Misc.	USB to STM32 for remote management RunBMC compliant socket
Development and Debug interfaces	Mini USB
Power	12V DC Jack ATX standard
Temperature	Commercial: 0°C to 70°C
Dimensions	PCBA: 100 x 137mm
Enclosure	Optional

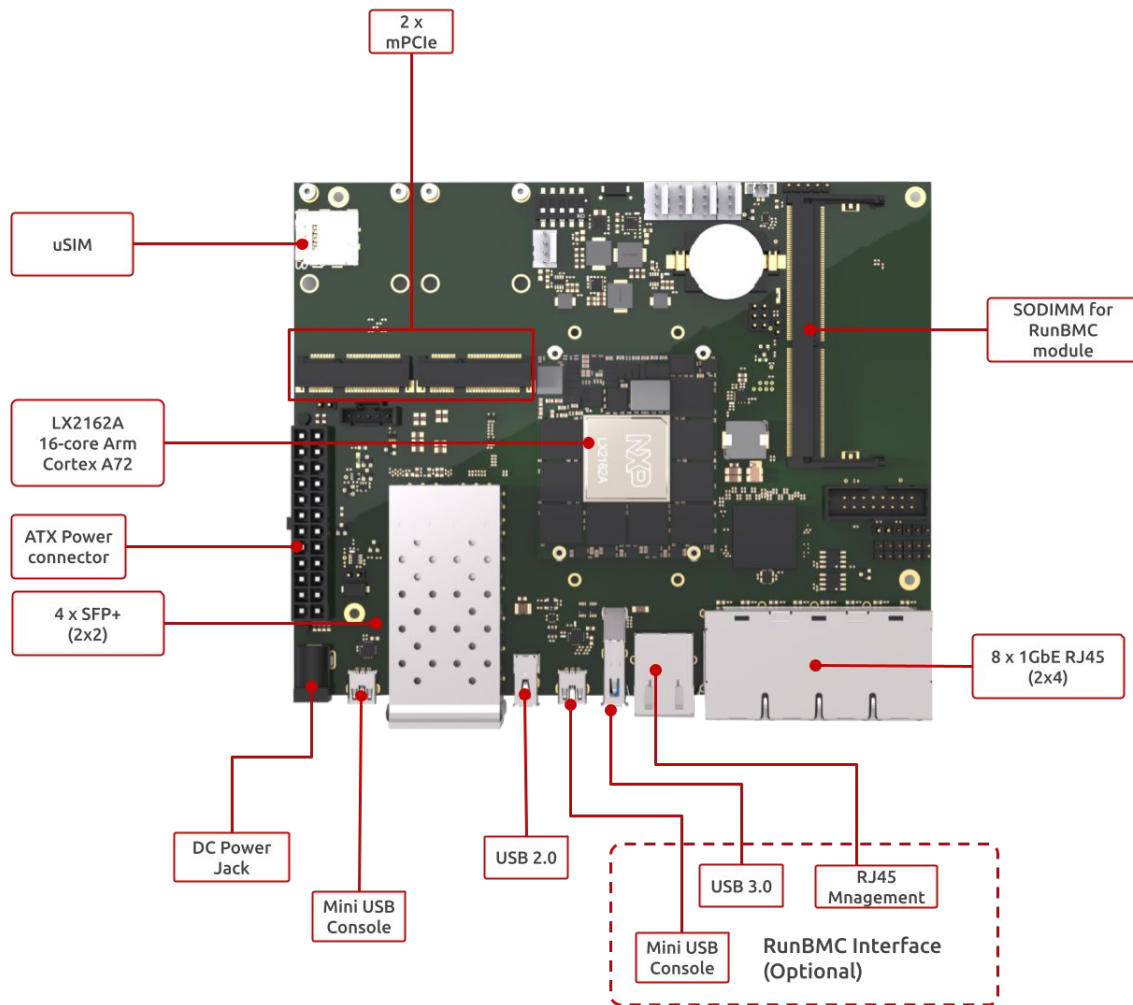


Ordering Information

Available on Shop	
SKU	Description
Buy Now	ClearFog LX2162A 8GB RAM 8GB eMMC Com.Temp R00

• To choose your ideal configuration see our [Product Configurator Tool](#)

Accessories:	
SKU	Description
PA00012	12V 5A US Power Adapter
PA00013	12V 5A EU Power Adapter
MSD016B	Micro SD 16GB



For more information about the ClearFog LX2-Lite Software/Hardware visit our:

[Developer Center](#)