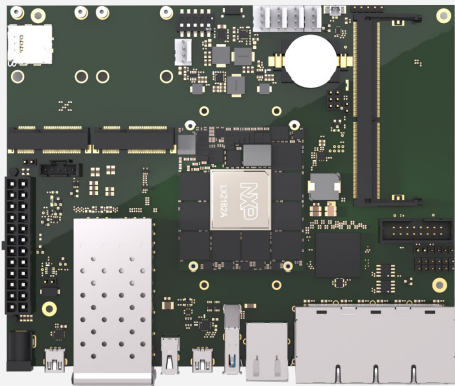


# ClearFog LX2-Lite SBC

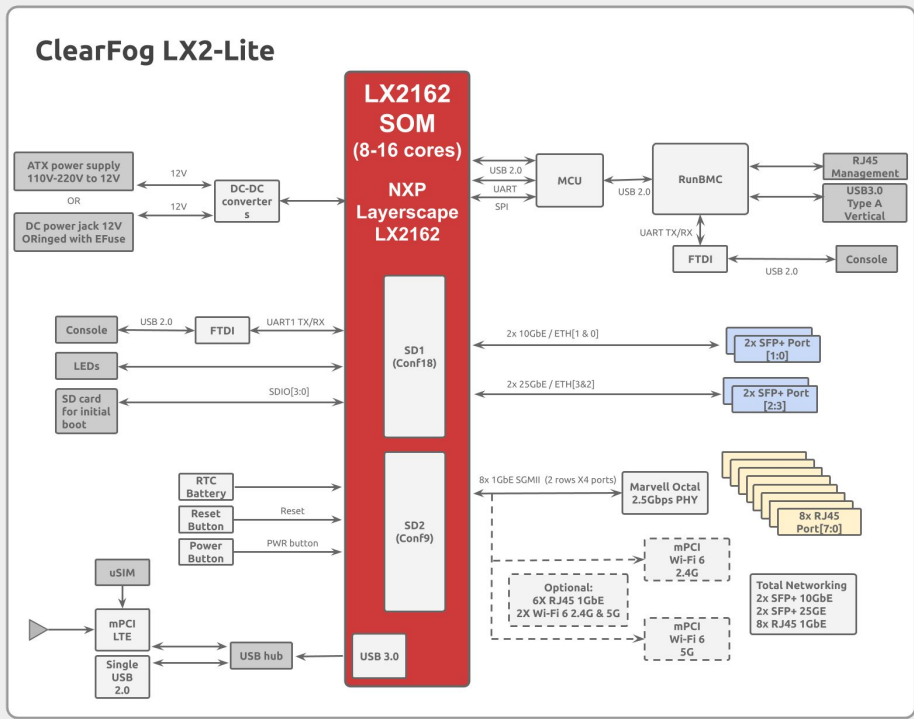
Up to 16 x Arm Cortex A72, up to 2.2GHz



- SoC: NXP Layerscape LX2162A up to 16-core Arm Cortex A72
- Memory: Up to 32GB 64 bit SO-DIMM DDR4 (not included by default)
- Storage: Optional eMMC (8GB by default)
- Temperature: Commercial (0C to 70C)
- OS: Linux



	ClearFog LX2-Lite
<b>I/O</b>	1 x USB 3.0
<b>Networking</b>	2 x SFP28 ports (25GbE each) 2 x SFP+ ports (10GbE each) 8 x 1GbE copper (RJ45)
<b>Processor</b>	NXP Layerscape LX2162A 16-core Arm Cortex A72 up to 2GHz
<b>Memory &amp; Storage</b>	Up to 32GB DDR4 8GB eMMC MicroSD
<b>Misc.</b>	USB to STM32 for remote management RunBMC compliant socket
<b>Development and Debug interfaces</b>	Mini USB
<b>Power</b>	12V DC Jack ATX standard
<b>Temperature</b>	Commercial: 0°C to 70°C
<b>Dimensions</b>	PCBA: 100 x 137mm
<b>Enclosure</b>	Optional

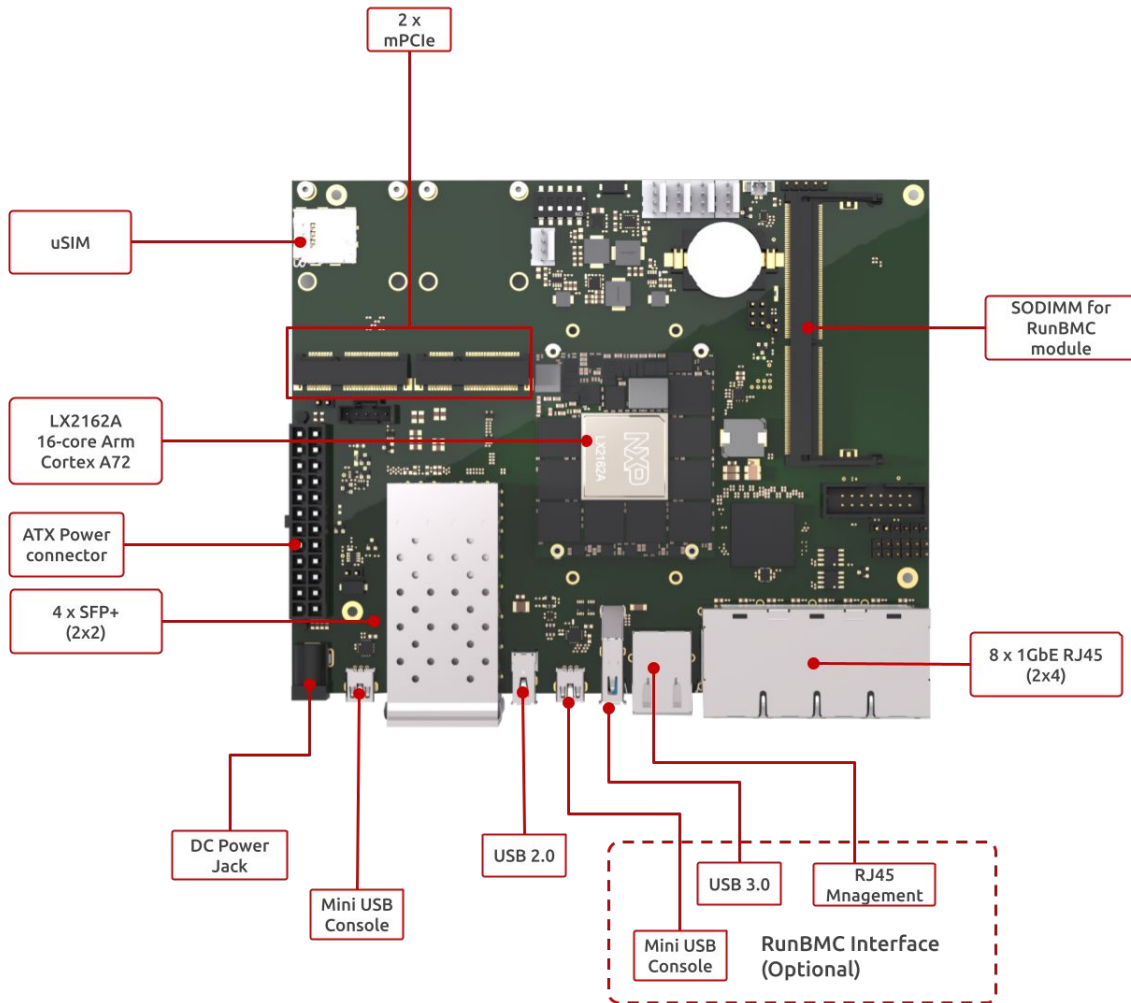


## Ordering Information

Available on Shop	
SKU	Description
<a href="#">SRX2162S00D08GE008C00CH</a>	ClearFog LX2162A 8GB RAM 8GB eMMC Com.Temp R00
<a href="#">SRX2162S00D16GE008C00CH</a>	ClearFog LX2162A 16GB RAM 8GB eMMC Com.Temp R00

- To choose your ideal configuration see our [Product Configurator Tool](#)

Accessories:	
SKU	Description
<a href="#">PA00012</a>	12V 5A US Power Adapter
<a href="#">PA00013</a>	12V 5A EU Power Adapter
<a href="#">MSD016B</a>	Micro SD 16GB



For more information about the ClearFog LX2-Lite Software/Hardware visit our:

[Developer Center](#)