

ClearFog A388 Base SBC

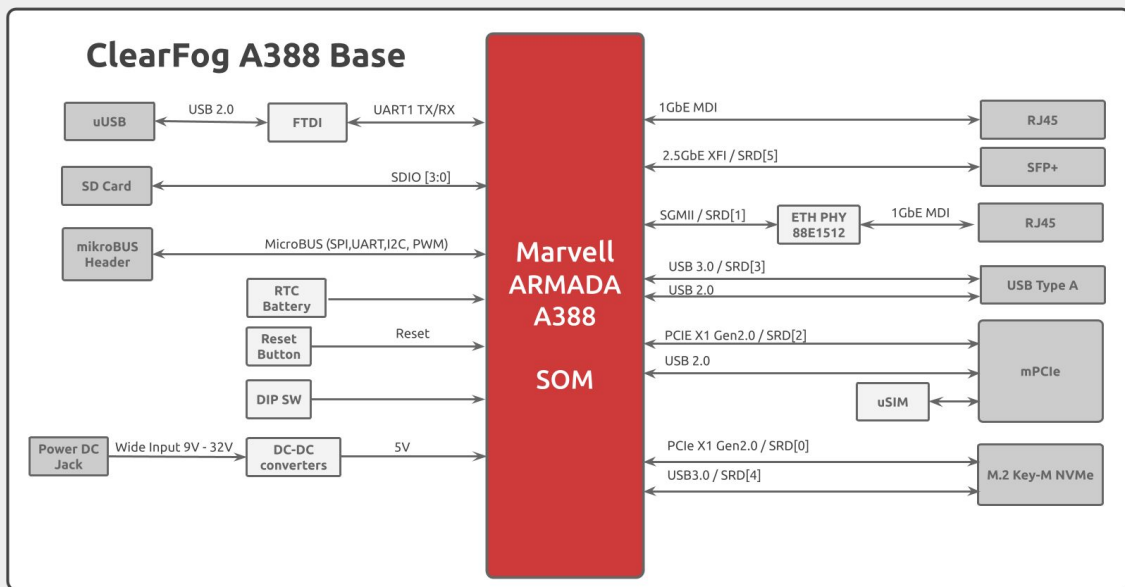
Dual Core ArmV7, up to 1.6GHz



- SoC: Marvell ARMADA 388 (88F6828) Dual core ARM Cortex A9
- Memory: Up to 2GB
- Storage: 8GB eMMC
- Temperature: Commercial (0C to 70C), Industrial (-40C to 85C)
- OS: Linux



| ClearFog A388 Base | |
|---|---|
| I/O | 1 x USB 3.0 |
| Networking | 2 x Ethernet RJ45 10/100/1000 1 x SFP (up to 2.5GbE) |
| Processor | Marvell ARMADA based A388 Dual core Arm Cortex A9 up to 1.6 GHz |
| Memory & Storage | Up to 2GB DDR3 8GB eMMC MicroSD |
| Misc. | Indication LEDs User Push Buttons RTC Battery |
| Development and Debug interfaces | Micro USB |
| Power | 9V-32V |
| Expansion card I/Os | MikroBUS header Mini PCIe with SIM holder M.2 |
| Temperature | Commercial: 0°C to 70°C Industrial: -40°C to 85°C |
| Dimensions | PCBA: 100 x 70mm Enclosure: 120 x 80 x 30 mm |
| Enclosure | Extruded aluminum |



Ordering Information

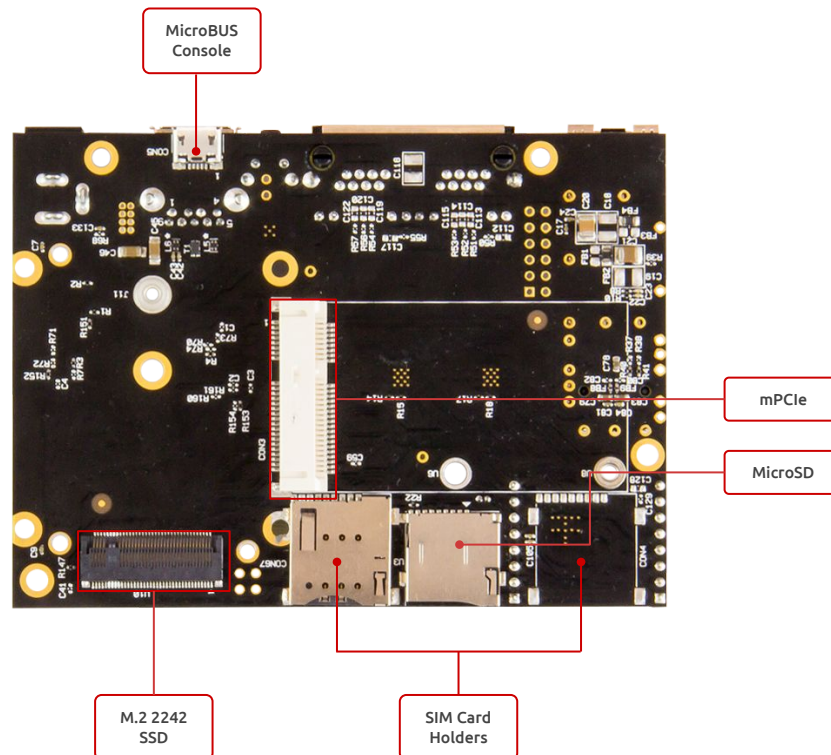
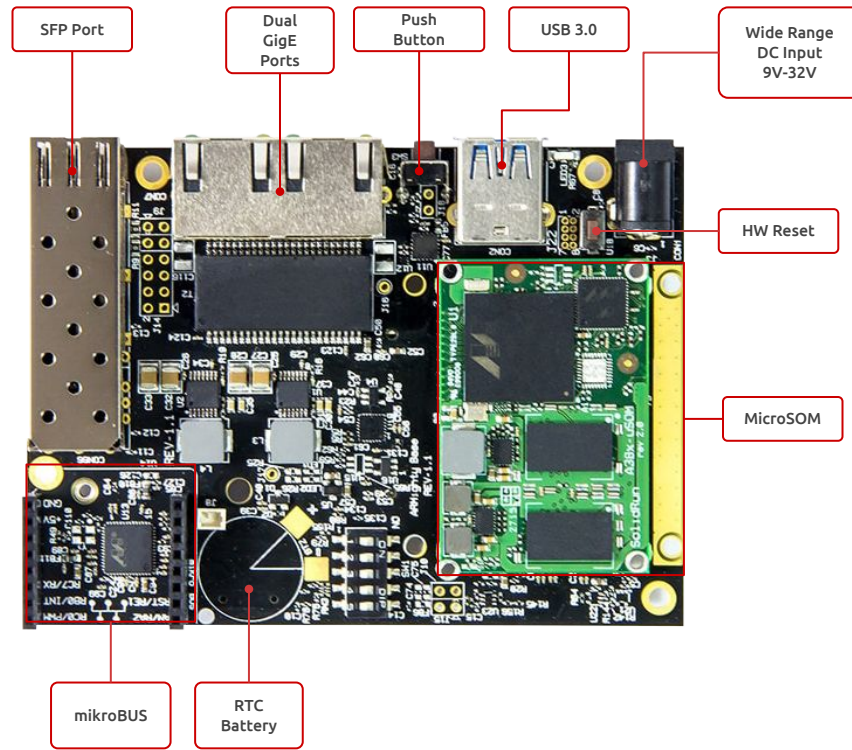
Available on Shop

| SKU | Description |
|---|---|
| SRM6828S00D01GE000B03CH | SOM A388 Dual ClearFog Base No WiFi/BT 1GB RAM No eMMC Com.Temp R03 Inc. Heatsink |
| SRM6828S00D01GE008B02CH | SOM A388 Dual ClearFog Base No WiFi/BT 1GB RAM 8GB eMMC Com.Temp R02 Inc. Heatsink |
| SRM6828S00D01GE000B03CE | SOM A388 Dual ClearFog Base No WiFi/BT 1GB RAM No eMMC Com.Temp R03 Inc. Enclosure |
| SRM6828S00D01GE008B02CE | SOM A388 Dual ClearFog Base No WiFi/BT 1GB RAM 8GB eMMC Com.Temp R02 Inc. Enclosure |

- To choose your ideal configuration see our [Product Configurator Tool](#)

Accessories:

| SKU | Description |
|-------------------------|---------------------------|
| PA00012 | 12V 1.5A US Power Adapter |
| PA00013 | 12V 1.5A EU Power Adapter |
| MSD016B | Micro SD 16GB |



For more information about the ClearFog Base Software/Hardware visit our:

Developer Center