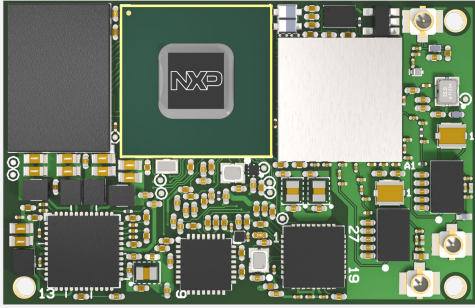


# i.MX 8XLITE SOM

Up to 2 x Arm Cortex-A35 cores, 1 x Cortex-M4F core for real-time processing

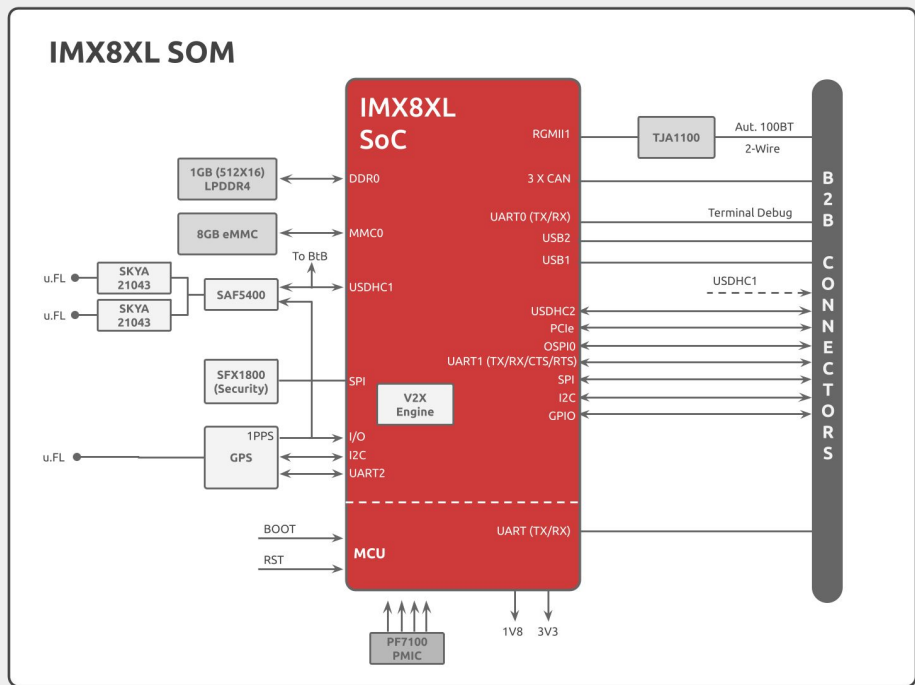
# NXP i.MX 8XLite Processor System on Module



- Built-in V2X and V2I capabilities
- Supports Ethernet, CAN, PCIe, and USB 2.0 for advanced communications
- Small form factor and low power consumption



		i.MX 8XLite Solo	i.MX 8XLite Dual
CPU Details	CPU Name	NXP i.MX 8XLite	NXP i.MX 8XLite
	CPU Type	1 x Cortex A53 1 x Cortex M4F	2 x Cortex A53 1 x Cortex M4F
	CPU Speed	1.2GHz Industrial	1.2GHz Industrial
RAM	Memory & Storage	1GB LPDDR4 with inline ECC	1GB LPDDR4 with inline ECC
	Internal Storage	8GB eMMC	8GB eMMC
	External Storage Support	NOR-Flash SD USB 2.0 PCIe-SSD	NOR-Flash SD USB 2.0 PCIe-SSD
Networking	Ethernet	100BASE-T1 Automotive Ethernet	100BASE-T1 Automotive Ethernet
	Wireless	DSRC (V2X) Single modem Dual antenna GPS	DSRC (V2X) Single modem Dual antenna GPS
Connectivity	USB 2.0	2	2
	PCIe	1	1
	I2C	2	2
	SPI	2	2
	UART	2	2
	GPIO	✓	✓
	PWM	✓	✓
	SD/MMC	1	1
	JTAG	Test point header	Test point header
	CAN	3	3
OS Support	Embedded Linux	Linux	Linux
Physical	Size	47 x 30 mm	47 x 30 mm
	Interface	2 x Hirose DF40 connectors	2 x Hirose DF40 connectors
Power	Main Voltage	5V	5V
	I/O Voltage	3.3V / 1.8V	3.3V / 1.8V
Environment	Temperature	Industrial: -40°C to 85°C Industrial Extended: -40°C to 105°C	Industrial: -40°C to 85°C Industrial Extended: -40°C to 105°C
	Humidity	Humidity (non-condensing): 10% – 90%	Humidity (non-condensing): 10% – 90%



## Ordering Information

### Available on Shop

SKU	Description
<a href="#">SR8XLDUW2XD01GE008V10I0</a>	SOM i.MX 8XL Dual V2X 1GB RAM 8GB eMMC Ind.Temp R1.0

- To choose your ideal configuration see our [Product Configurator Tool](#)

### Accessories:

SKU	Description

### Kits

SKU	Description

For more information about the i.MX 8XLite SOM Software/Hardware visit our:

[Developer Center](#)