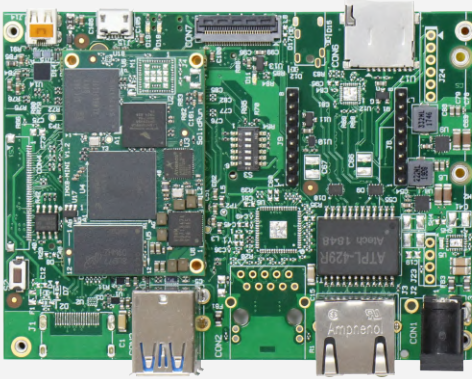


HummingBoard Ripple SBC

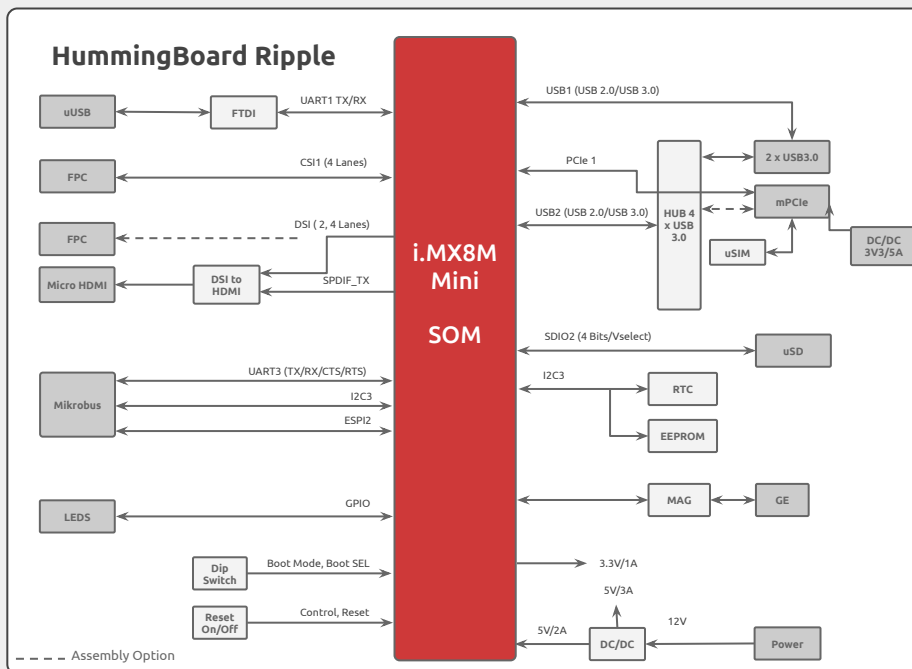
Up to 4 x Arm Cortex-A53 cores



- SoC: NXP i.MX8M Mini based Single to Quad Core SOM Cortex A53 / NXP i.MX8M Plus based Dual to Quad Core SOM Cortex A53
- Memory: Up to 4GB
- Storage: 8GB eMMC
- Temperature: Commercial (0C to 70C), Industrial (-40C to 85C)
- OS: Linux



	i.MX8M Mini	i.MX8M Plus
I/O	2 x USB 2.0 1 x MIPI-CSI	2 x USB 3.0 1 x MIPI-CSI
Networking	1 x Ethernet RJ45 10/100/1000 1 x 802.11 a/b/g/n/ac WiFi and Bluetooth (2.4/5 GHz)	1 x Ethernet RJ45 10/100/1000 1 x 802.11 a/b/g/n/ac WiFi and Bluetooth (2.4/5 GHz)
Processor	NXP i.MX 8M Mini Single to Quad core Arm Cortex A53 up to 1.8GHz (with Arm M4 GPP)	NXP i.MX 8M Plus Single to Quad core Arm Cortex A53 up to 1.8GHz (with Arm M7 GPP)
Memory & Storage	Up to 4GB LPDDR4 8GB eMMC MicroSD	Up to 8GB LPDDR4 8GB eMMC MicroSD
Display	Micro HDMI	Micro HDMI
Misc.	1 x Reset button 1x Configurable push button 3 x LED indicators RTC	1 x Reset button 1x Configurable push button 3 x LED indicators RTC
Development and Debug interfaces	Micro USB	Micro USB
Power	7V - 36V	7V - 36V
Expansion card I/Os	mikroBUS header Mini PCIe with SIM holder	mikroBUS header Mini PCIe with SIM holder
Temperature	Commercial: 0°C to 70°C Industrial: -40°C to 85°C	Commercial: 0°C to 70°C Industrial: -40°C to 85°C
Dimensions	PCBA: 100 x 70mm Enclosure: 142 x 80 x 30mm	PCBA: 100 x 70mm Enclosure: 142 x 80 x 30mm
Enclosure	Extruded aluminum	Extruded aluminum



Ordering Information

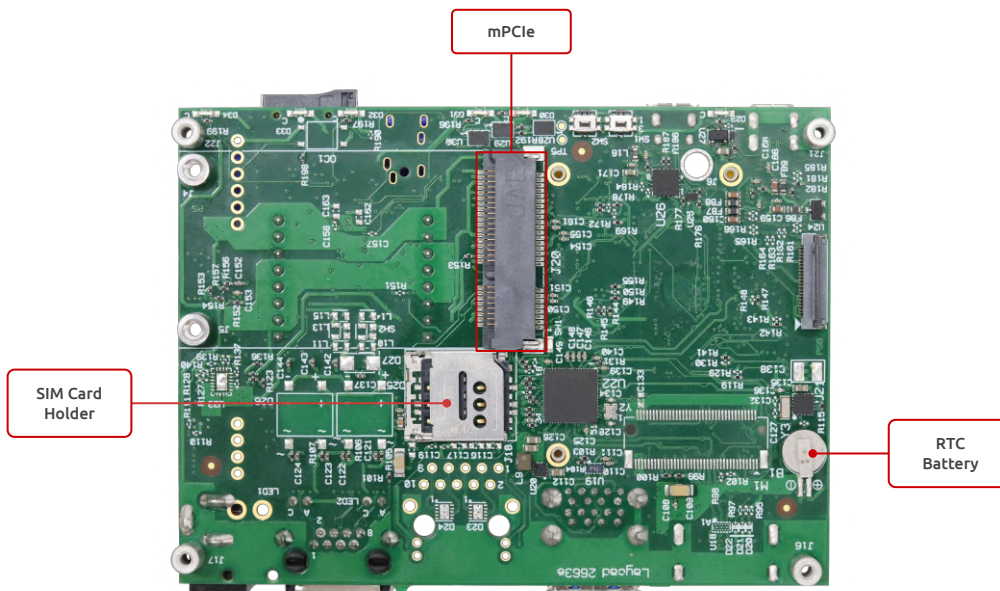
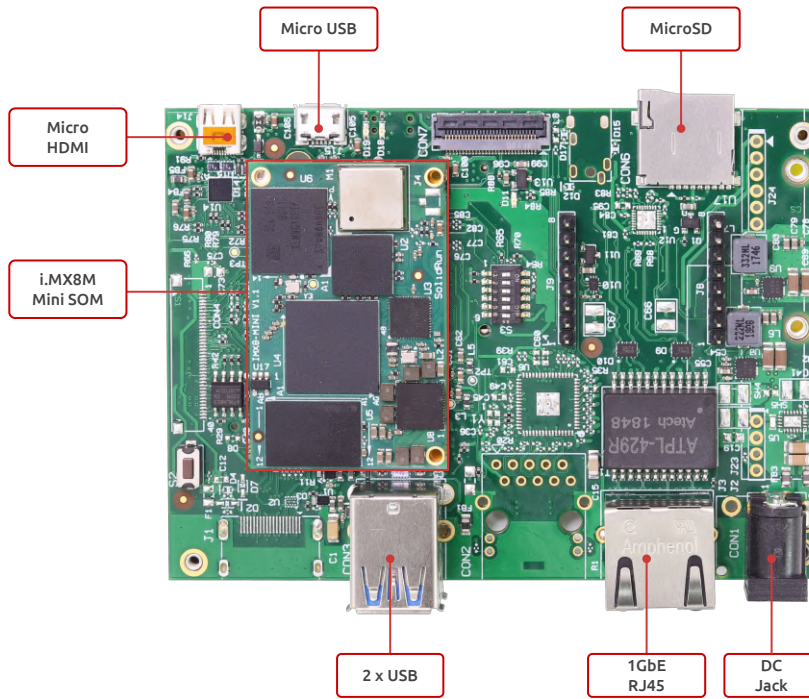
Available on Shop

SKU	Description
SRMM8ODWB1D02GE008R02CH	SOM i.MX8M Mini Quad HummingBoard Ripple Inc. WiFi/BT 2GB RAM 8GB eMMC Com.Temp R02 Inc. Heatsink
SRMM8ODW00D02GE008R02CH	SOM i.MX8M Mini Quad HummingBoard Ripple No WiFi/BT 2GB RAM 8GB eMMC Com.Temp R02 Inc. Heatsink
SRMP8ODWB1D01GE008R02CH	SOM i.MX8M Plus Quad HummingBoard Ripple Inc. WiFi/BT 2GB RAM 8GB eMMC Com.Temp R02 Inc. Heatsink
SRMP8ODW00D01GE008R02CH	SOM i.MX8M Plus Quad HummingBoard Ripple No WiFi/BT 2GB RAM 8GB eMMC Com.Temp R02 Inc. Heatsink

- To choose your ideal configuration see our [Product Configurator Tool](#)

Accessories:

SKU	Description
PA00012	12V 1.5A US Power Adapter
PA00013	12V 1.5A EU Power Adapter
AN00016	2.4/5GHz SMA Antenna
AN00009	2.4GHz SMA Antenna
MSD016B	Micro SD 16GB
QT00EC25AU	Quectel EC25AU - LTE Cat 4 AU
QT00EC25A	Quectel EC25AU - LTE Cat 4 US
QT00EC25E	Quectel EC25AU - LTE Cat 4 EU
WI00002	USB to MicroUSB cable



For more information about the HummingBoard Ripple Software/Hardware visit our:

Developer Center