

# ClearFog A388 Base SBC

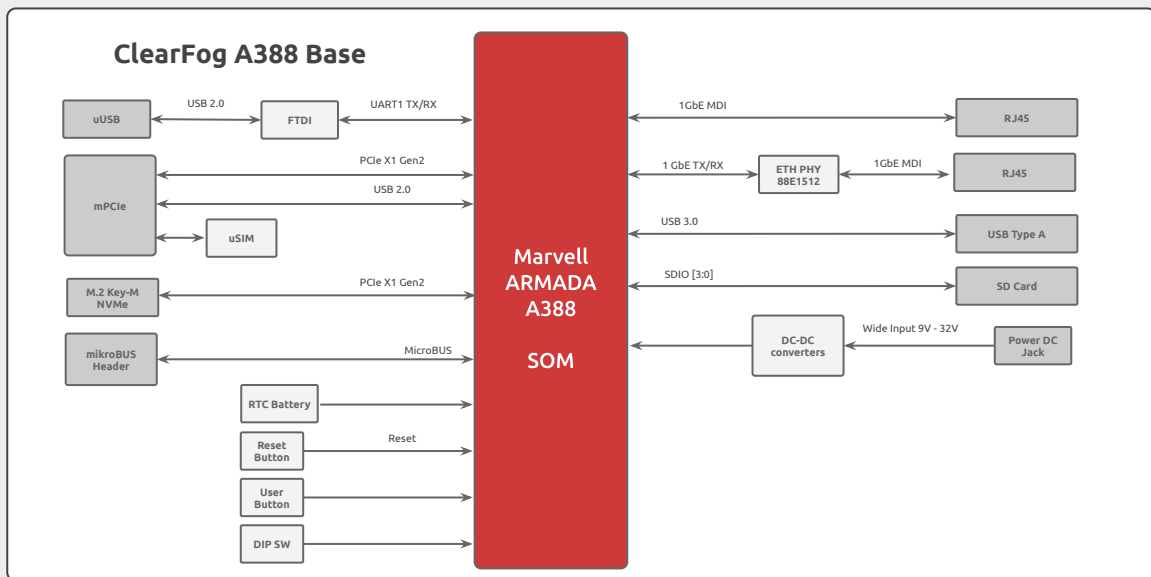
Dual Core ArmV7, up to 1.6GHz



- SoC: Marvell ARMADA 388 (88F6828) Dual core ARM Cortex A9
- Memory: Up to 2GB
- Storage: 8GB eMMC
- Temperature: Commercial (0C to 70C), Industrial (-40C to 85C)
- OS: Linux



ClearFog A388 Base	
<b>I/O</b>	1 x USB 3.0
<b>Networking</b>	2 x Ethernet RJ45 10/100/1000 1 x SFP (up to 2.5GbE)
<b>Processor</b>	Marvell ARMADA based A388 Dual core Arm Cortex A9 up to 1.6 GHz
<b>Memory &amp; Storage</b>	Up to 2GB DDR3 8GB eMMC MicroSD
<b>Misc.</b>	Indication LEDs User Push Buttons RTC Battery
<b>Development and Debug interfaces</b>	Micro USB
<b>Power</b>	9V-32V
<b>Expansion card I/Os</b>	MikroBUS header Mini PCIe with SIM holder M.2
<b>Temperature</b>	Commercial: 0°C to 70°C Industrial: -40°C to 85°C
<b>Dimensions</b>	PCBA: 100 x 70mm Enclosure: 120 x 80 x 30 mm
<b>Enclosure</b>	Extruded aluminum



## Ordering Information

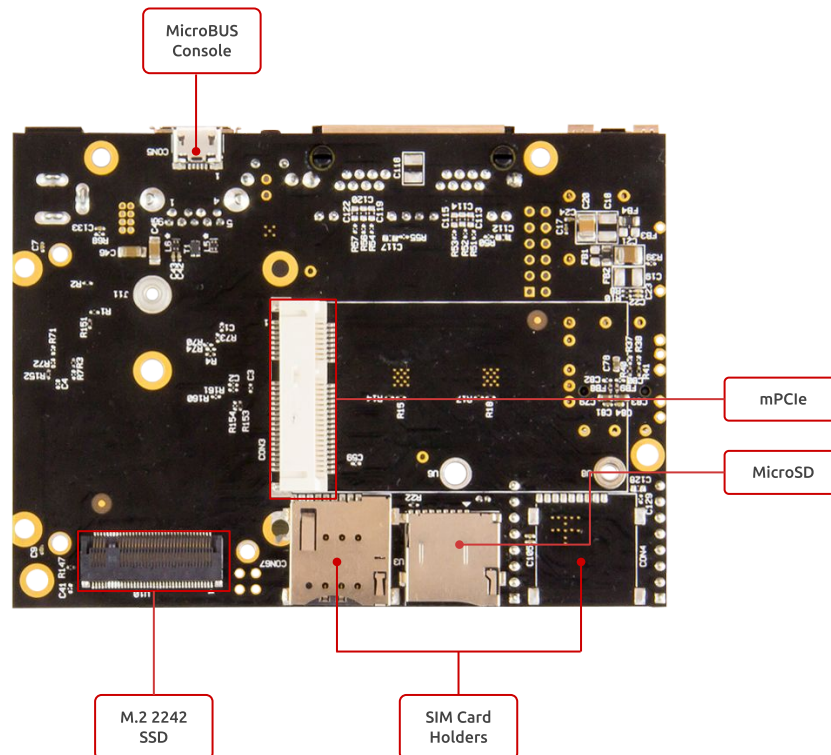
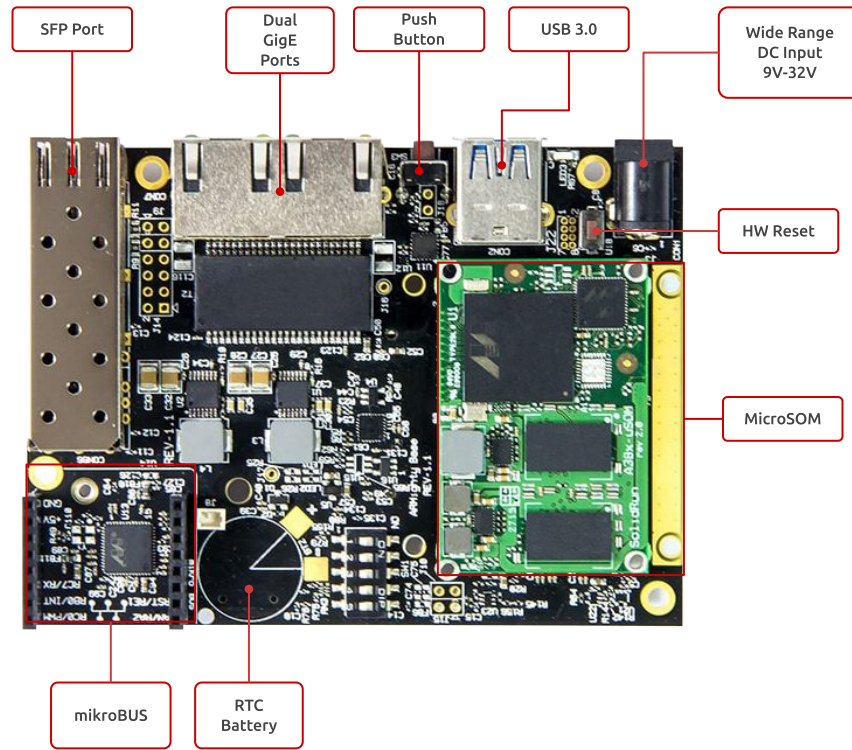
### Available on Shop

SKU	Description
<a href="#">SRM6828S00D01GE000B02CH</a>	SOM A388 Dual   ClearFog Base   No WiFi/BT   1GB RAM   No eMMC   Com.Temp   R02   Inc. Heatsink
<a href="#">SRM6828S00D01GE008B02CH</a>	SOM A388 Dual   ClearFog Base   No WiFi/BT   1GB RAM   8GB eMMC   Com.Temp   R02   Inc. Heatsink
<a href="#">SRM6828S00D01GE000B02CE</a>	SOM A388 Dual   ClearFog Base   No WiFi/BT   1GB RAM   No eMMC   Com.Temp   R02   Inc. Enclosure
<a href="#">SRM6828S00D01GE008B02CE</a>	SOM A388 Dual   ClearFog Base   No WiFi/BT   1GB RAM   8GB eMMC   Com.Temp   R02   Inc. Enclosure

- To choose your ideal configuration see our [Product Configurator Tool](#)

### Accessories:

SKU	Description
<a href="#">PA00012</a>	12V 1.5A US Power Adapter
<a href="#">PA00013</a>	12V 1.5A EU Power Adapter
<a href="#">MSD016B</a>	Micro SD 16GB



For more information about the ClearFog Base Software/Hardware visit our:

**Developer Center**